



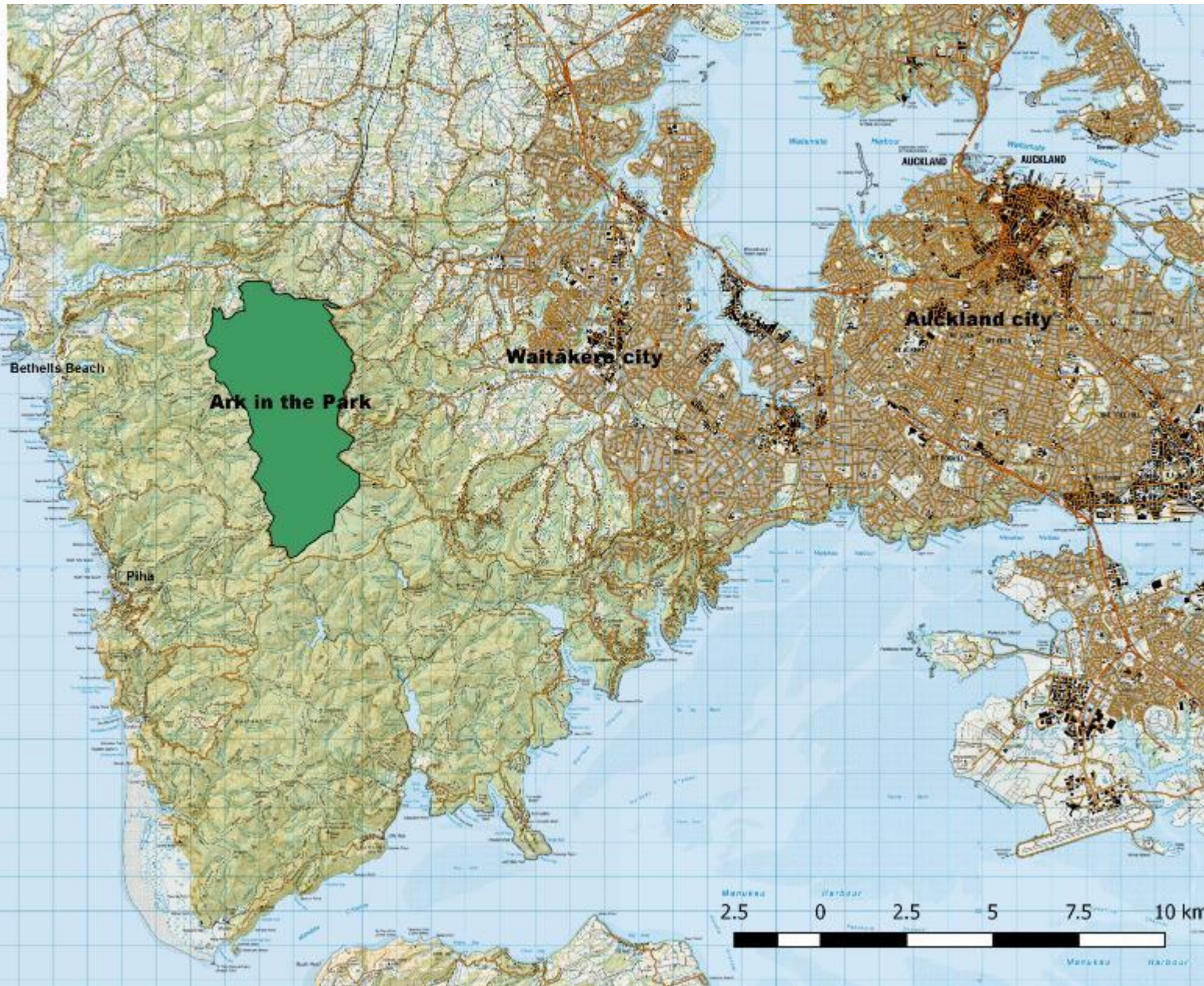
**Ark in the Park:  
Information revealed by trap  
sensors**



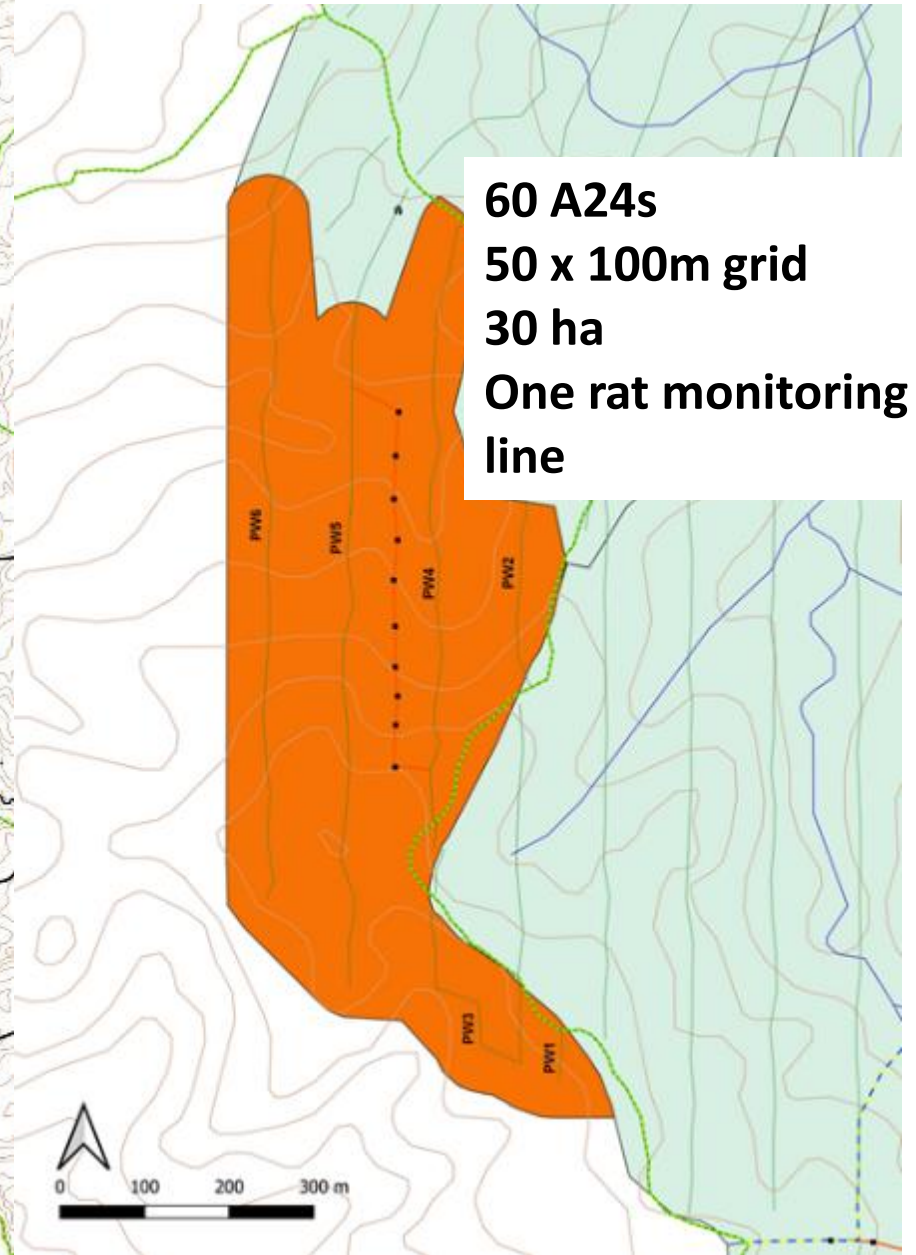
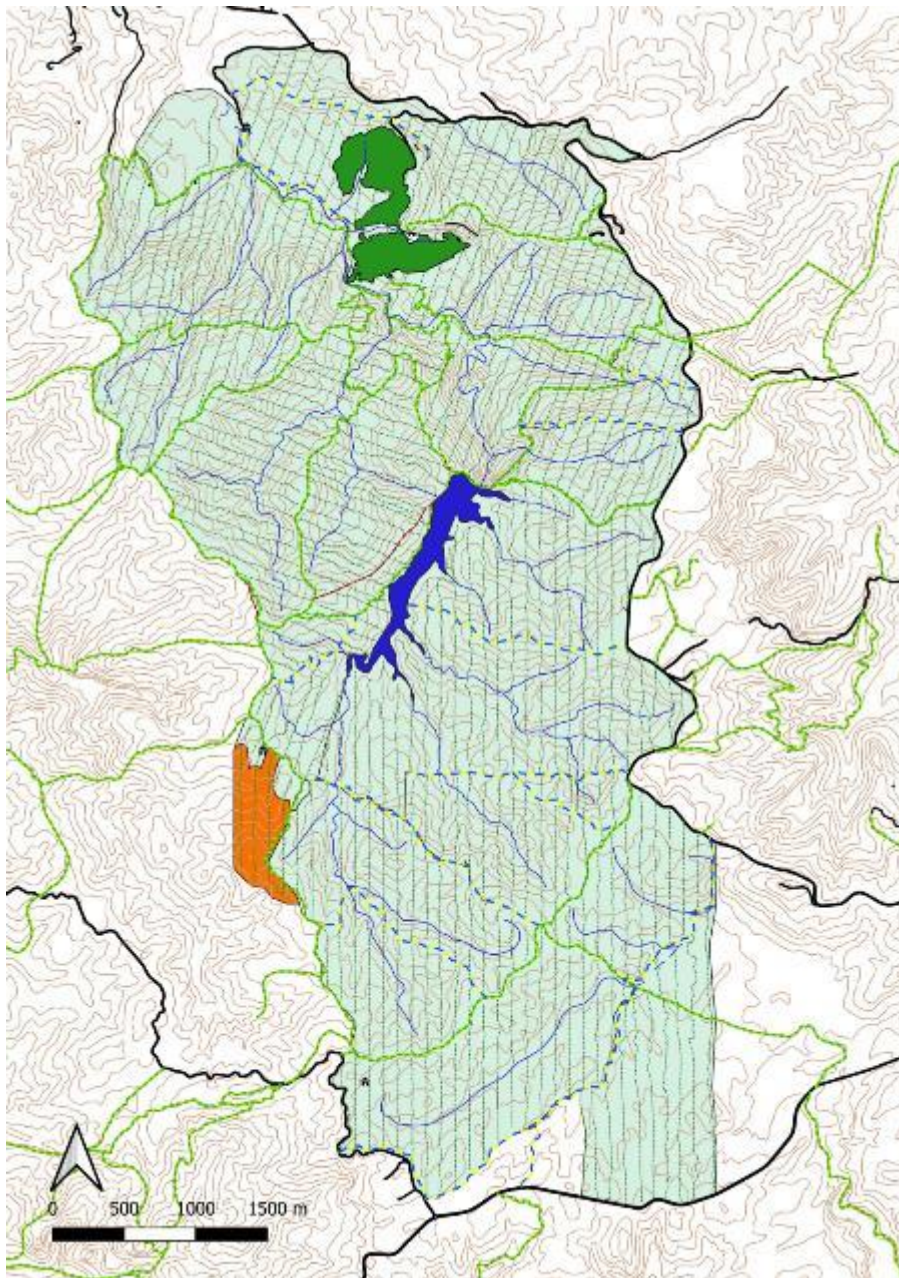




ark in the park

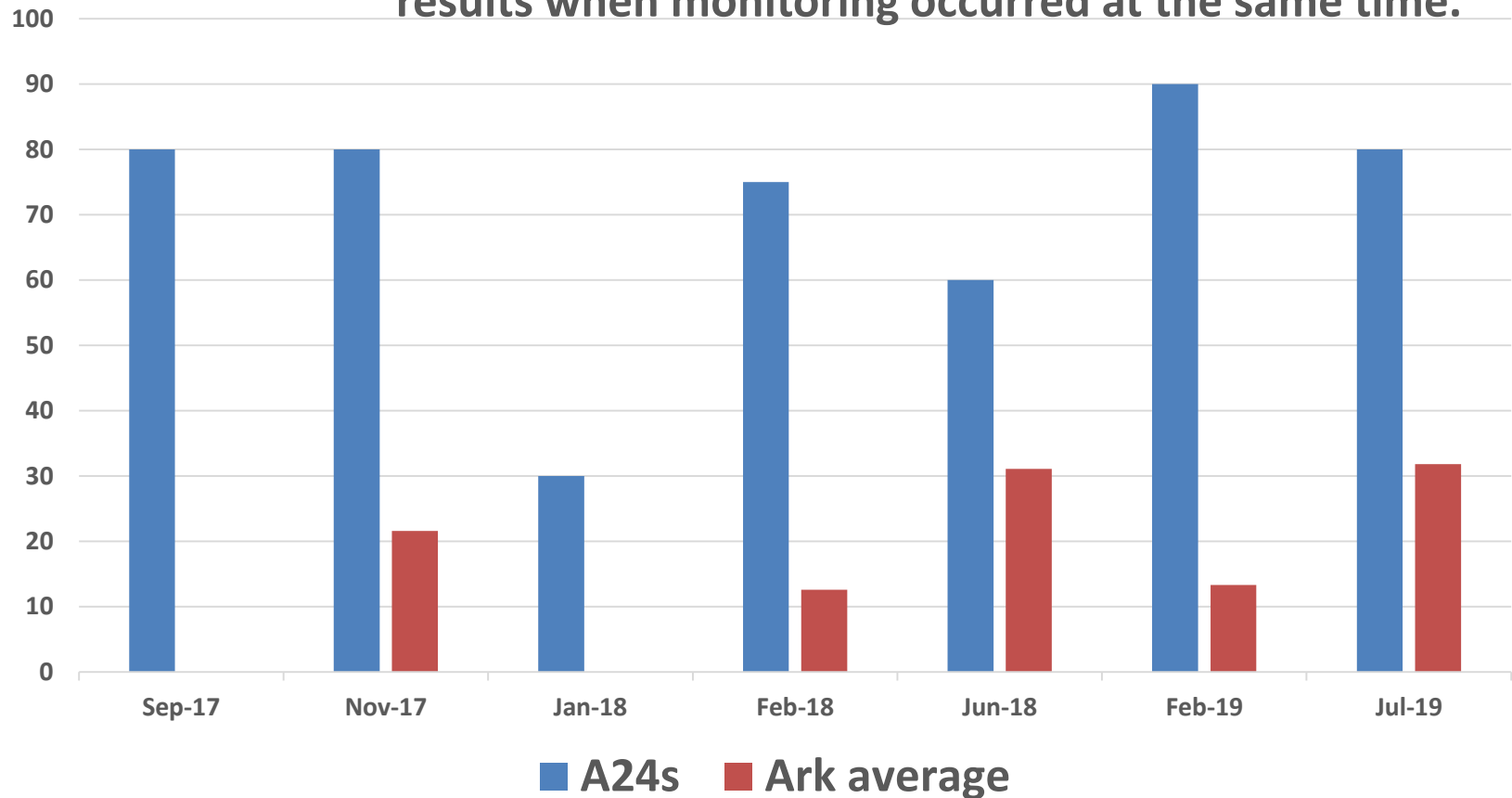






# An aside.....

Ark A24 block rat monitoring (%), plus a comparison to Ark results when monitoring occurred at the same time.



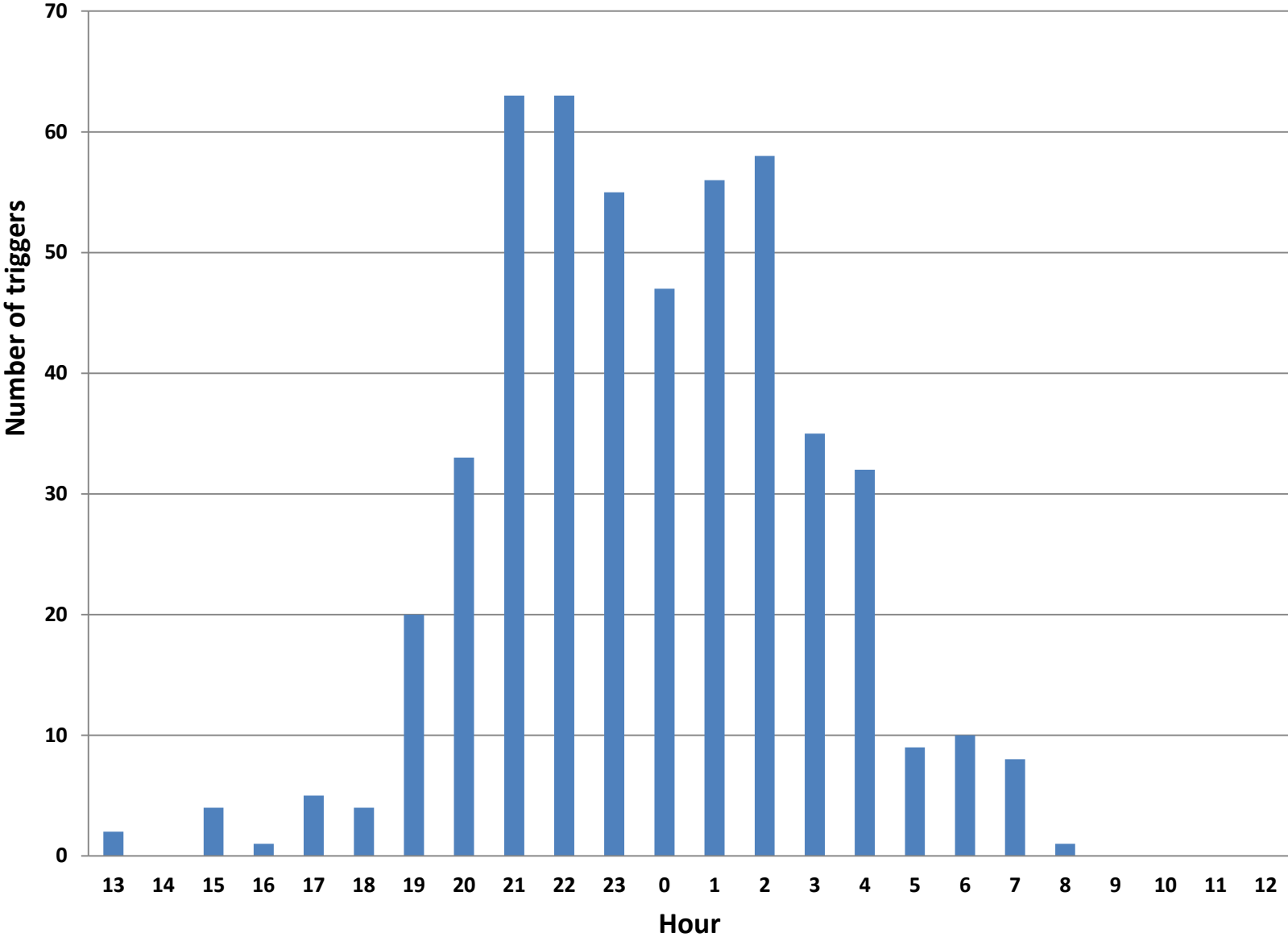






🌙 🌡️ 44F 07C 25/06/19 20:15:52

# Triggers per hour of the day and night



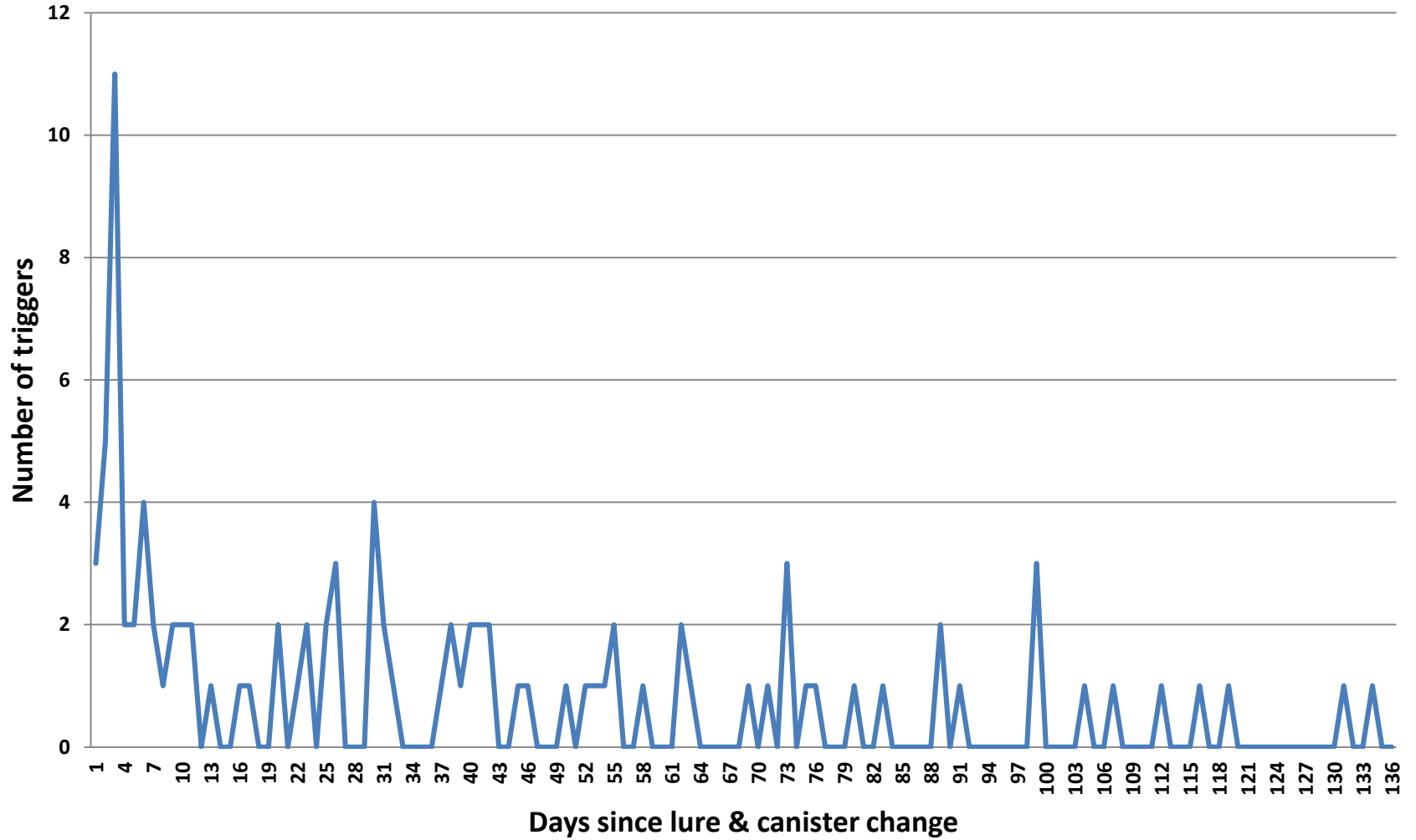
# Application?

- Release of a temporary lure such as sound or a pheromone, timed to coincide with high activity hours.





## Triggers over time, after lure and canister change



# Thanks to

- Stuart Rogers – Ark volunteer

- Simon and Geoff - Encounter Solutions



 ENCOUNTER SOLUTIONS



