

# Sanctuary Mountain®

MAUNGATAUTARI



MAUNGATAUTARI ECOLOGICAL ISLAND TRUST

## Encompassing vision:

Share the mauri\* and mana of the Maunga.

## Purpose:

Protect and enhance the mauri of  
Maungatautari.

\*mauri (“life force”)



## Basic facts:

- 3,365 hectares enclosed with 47 km of pest-proof fence.
- Scenic reserve, council, private and iwi owned land
- 21 adjoining landowners
- Co-governance board of 9 trustees representing iwi, landowners and community
- Funder Partnerships key to our success
- Access around fence, over the mountain.



## Key Achievements over Past 5 Years

- Debt reduction from \$1m to \$65k
- Co governance model working most effectively
- Review of Management Structure
- Landowner agreements finally being completed
- New depot at Tari Rd , Nursery
- Visitor Centre capital improvements are next stage
- Education centre funding being sought for new education and research facility

## Upcoming Reviews

- Review of Ecological Resoration Plan
- Review of Biosecurity Plan
- Comprehensive Fence Audit now complete-asset management

## Reintroductions -12

- Kiwi (2005)
- Takahe (2006)
- *Galaxiid* fish species - banded & giant kokopu (2007)
- Kaka (2007)
- Hihi (2009)
- Whitehead (2009)
- Yellow crowned kakariki (2010)
- Robins (2011)
- Giant weta (2012)
- Tuatara (2012)
- Saddleback (2013)
- Kokako (2015)
- Takahe( 2017)



# Where are we now?



- Kiwis for Kiwis Strategy
- Strong hold for North Island Western Brown Kiwi
- 500 birds to be released over the next five years
- Future source for restocking other areas



# Species for future introductions...



Adult North Island weka. Orongo Bay, Russell, September 2014.  
Image © Les Feasey by Les Feasey



# Species for future introductions...





# Main line of defence: Pest-proof fence



# Pest removal milestones

- August 2006 - Xcluder® team completed the fence.
- September 2006 – helicopters dispersed poison bait.
- Eradications:
  - 2007- deer, pigs, cats, ferrets, stoats, weasels and possums
  - 2008 - hedgehogs
  - 2009 - goats, ship and Norway rats
  - 2014 – rabbits and hares
- Of the 14 species of introduced mammals on the mountain before the fence, only mice remain.



# Cost and Management of Fence

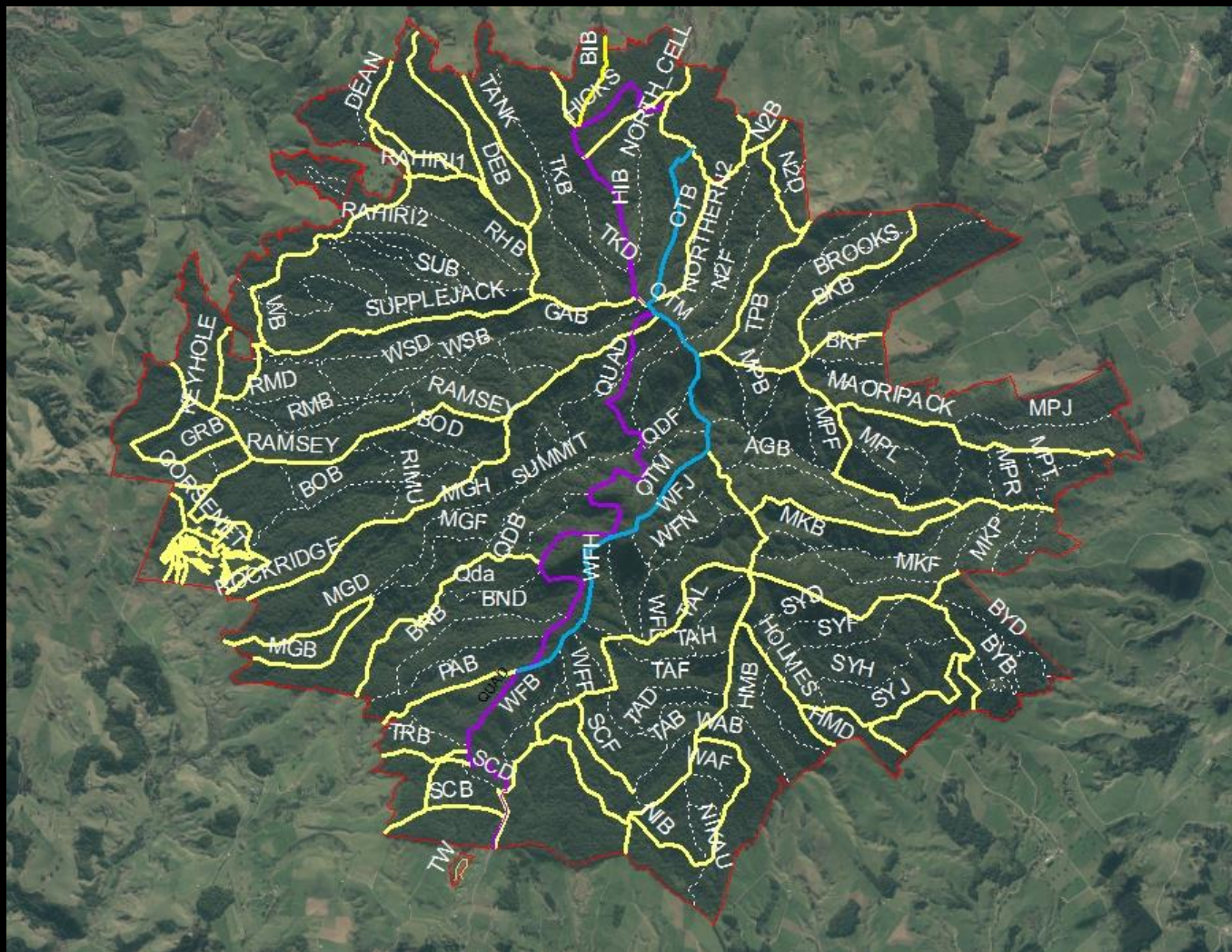
- Need to respond to breaches in all weather within 90 minutes.
- Need to monitor and bait around any breaches.
- Need to repair fence breaches.
- Need to fix security and communication failures quickly (all segments have dual paths).
- Need to cut plant growth back and manage weeds.
- Cost ~\$500k per annum.





## KEY:

- Fence line around the Mountain
- Monitoring lines
- New quad track OTM
- Original OTM track





Maunga  
Halo  
potential to  
link with  
other  
biodiversity  
sites



## The outcomes

- 30 species of native forest birds
- 40 rare and endangered wildlife species
- Reconstructed naturally-functioning ecosystem
- Absolutely unprecedented scale reconstruction





# Tourism & financial sustainability

- Building visitor numbers from 17,000 to 50,000 per annum by 2021.
- Providing infrastructure for visitor needs.
- Expanding our education programme from 3,500 to 5,000 pupils per annum.
- Maintain community support



## Strategic direction

- 10 year strategic plan
- Aspire to top 20 NZ visitor attractions
- Build tourism development
- Integrate mana whenua stories into interpretation
- Continue species reintroductions
- Research
- Grow volunteer support
- Strengthen partnerships





## Maungatautari – “share the mauri”

