

Nga Whenua Rahui

“Mehemea kei te ora a Papatuanuku
ka ora te tangata”

“If we nurture mother earth then she
will in turn nurture the people”

INTRODUCTION

Nga Whenua Rahui:

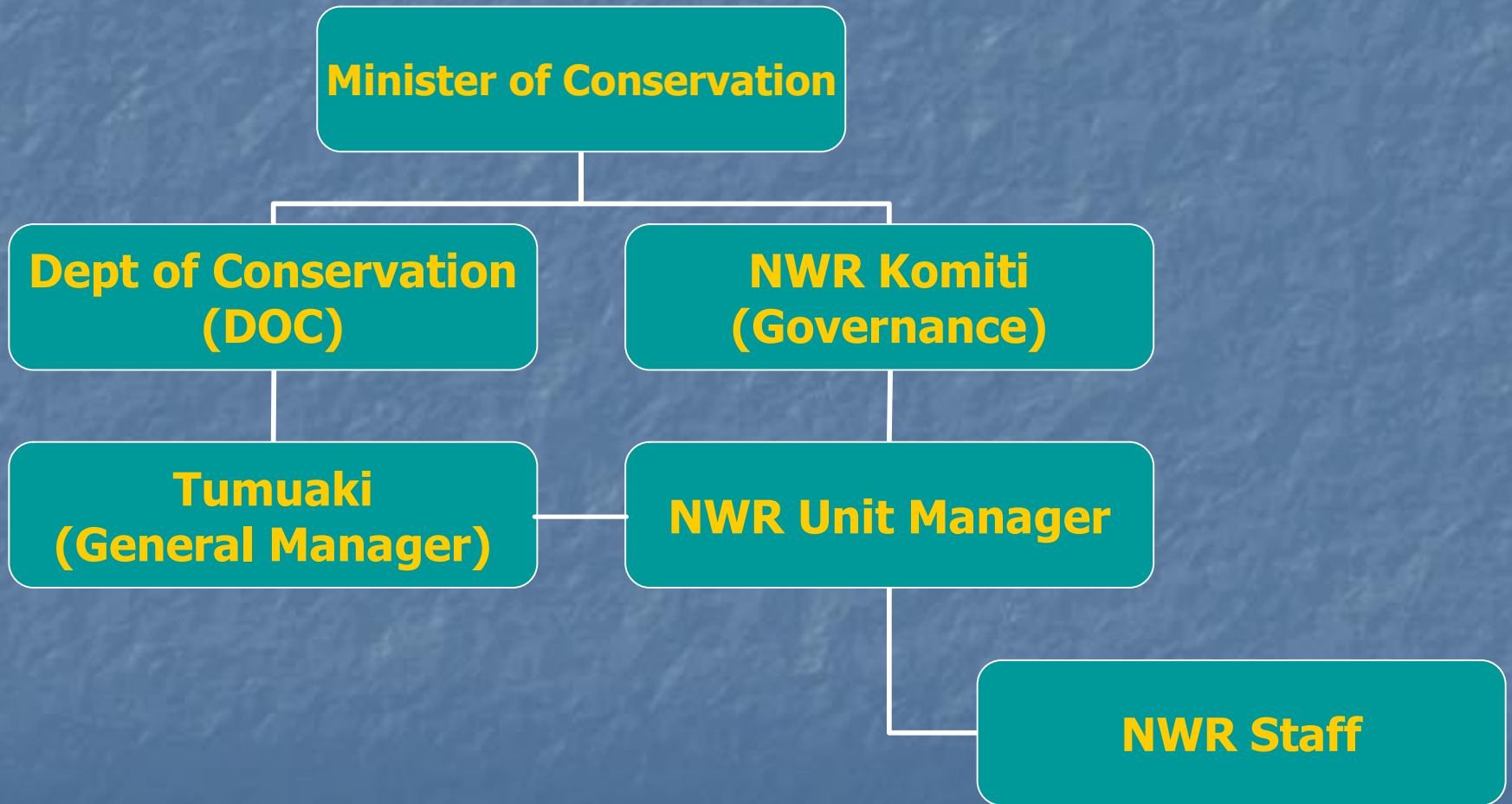
- aims to protect biodiversity on Maori-owned land
- provides incentives for voluntary conservation
- Formal protection - Nga Whenua Rahui kawenata

Vision:

“To enable Maori landowners the ability to apply Maori conservation ethics/values associated with their land and to achieve specified biodiversity outcomes”



Organizational Chart



Nga Whenua Rahui Fund

- Contestable Ministerial Fund established 1991

Matauranga Kura Taiao Fund

- Contestable Ministerial Fund established to retain, revive and use Matauranga Maori (indigenous biodiversity)

Who do we engage with?

- 
- A photograph of four men standing in a grassy field. The man on the far left is wearing a yellow t-shirt and dark trousers. The man next to him is wearing a light-colored button-down shirt and dark trousers. The man in the center is wearing a dark green button-down shirt and dark trousers. The man on the far right is wearing a white polo shirt and blue jeans. They are standing in front of a wooden bench. In the background, there is a blue lake, a rocky shoreline, and a large, forested mountain under a clear blue sky.
- Landowners/wider community
 - NWR Committee
 - Minister of Conservation
 - External Agencies

Landowner Aspirations

- 
- Retain ownership, management of their lands (Tino rangatiratanga)
 - Restore and protect the “mauri” to the lands and overall wellbeing/natural balance of the environment (Kaitiakitanga)

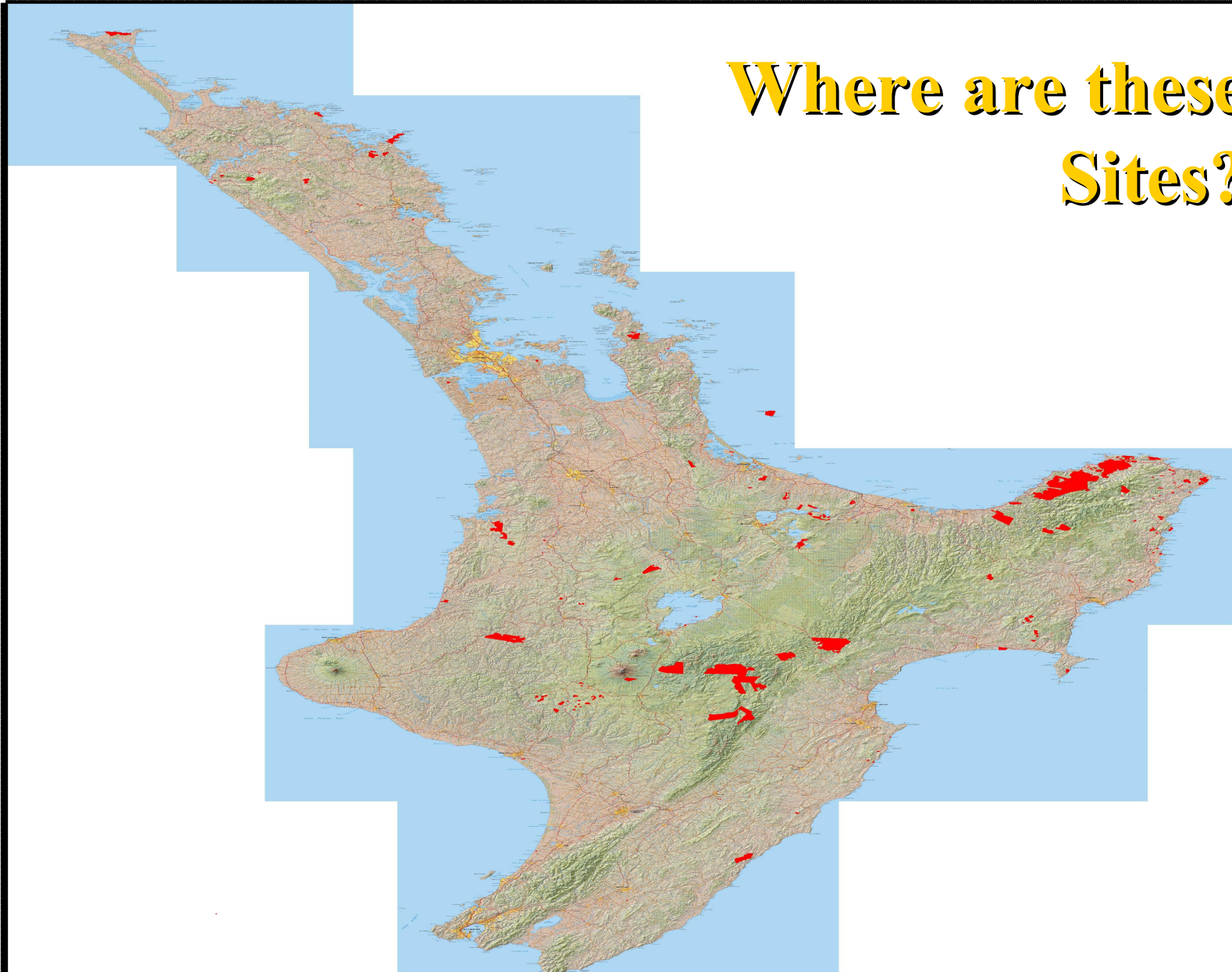
How do we assist the landowners?

- Management assistance and advice
- Resources
- Training Opportunities
- Enlisting support from external agencies
- Raise whanau /community awareness through direct program involvement



24530002480000250700025340002561000258800026150002642000266900026960002723000275000027770002804000283100028580002885000291200029390002966000299300030200003047000

5977006500400603100065680006085000611000613800061650006192000621900624500062730063000063270063540006381000640800643500064620064890006516006540006570006597006624006651006678000670500673200675900



Where are these Sites?

24530002480000250700025340002561000258800026150002642000266900026960002723000275000027770002804000283100028580002885000291200029390002966000299300030200003047000

5977006500400603100065680006085000611000613800061650006192000621900624500062730063000063270063540006381000640800643500064620064890006516006540006570006597006624006651006678000670500673200675900



Nga Whenua Rahui Kawenata

Map Scale: 1:3,234,000
Map Print Date:

Project Name & Location:

Crown Copyright Reserved
LINZ CIP Data Supply June 2007
Datum: NZGD50 Projection: NZMG
Units: Meters
Nga Whenua Rahui cannot guarantee that the information shown is accurate and should not be relied on in any manner without proper consultation with its client.

Types of Projects

- Large Scale Indigenous Forest management
- Wetland Enhancement & Protection
- Intensive Site Management
- Sites vary in size from 2 - 17,000 Ha
- 170,000 hectares currently administered by NWR



Intensive sites

- **Specie Focused-Protect existing and return of former**
- **Site Focused-National/Regional & Cultural significance**

Restoration of Landscapes-What are the Drivers?

- Reestablishment of Whakapapa connectivity (Tuakana/Teina relationships)
- Protect and enhance environments for future generations
- Taonga Species
- Sharing the experience with others
- Connecting our people back to the land
- Resource-"It's our cupboard"

What Pest Species do we Target and how are they primarily controlled?

- **Possums-Ground Control operators**
- **Feral goats, cattle and deer programs-Ground Hunters/Aerial culling**
- **Rodent control-Bait stations-Pindone/Ditrac**
- **Mustelid control-DOC 200 kill traps**
- **Feral Cats-Cage traps/Night Shooting**
- **Rabbits/Hares-Bait stations/Night shooting**
- **Weeds-Aerial Spraying/Ground contractors**

How can we help each other?

- Ideas
 - Experiences
 - Respect
 - Thoughtfulness
-
- "Mahia te Mahi"

“Thank You”