

A photograph of a plant with green, pinnate leaves and three bright pink, spurred flowers. The flowers have a long, slender spur extending downwards. The leaves are composed of several pairs of small, oval leaflets. The background is white.

Boundary Stream Mainland Island  
1996 - 2009

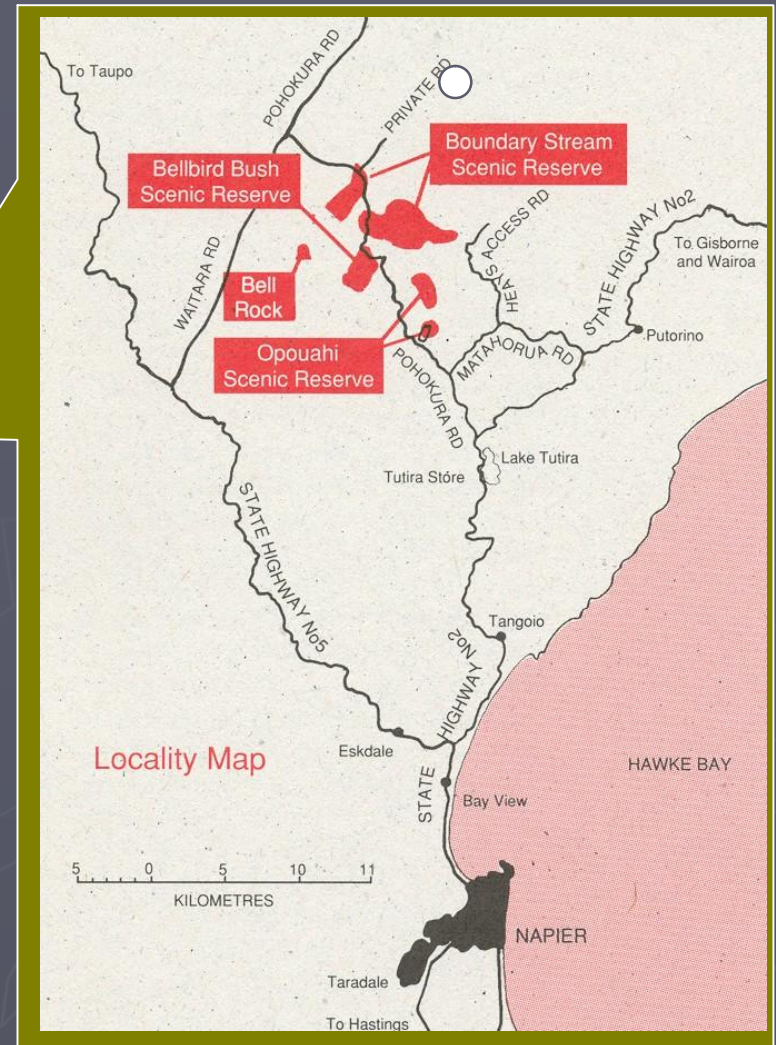
# Current Staff

Left to right

- ▶ Hana (kiwi dog)
- ▶ Kahori Nakagawa
- ▶ Peter Abbott
- ▶ Denise Fastier  
(team leader)
- ▶ Mark Melville
- ▶ Corey Mosen



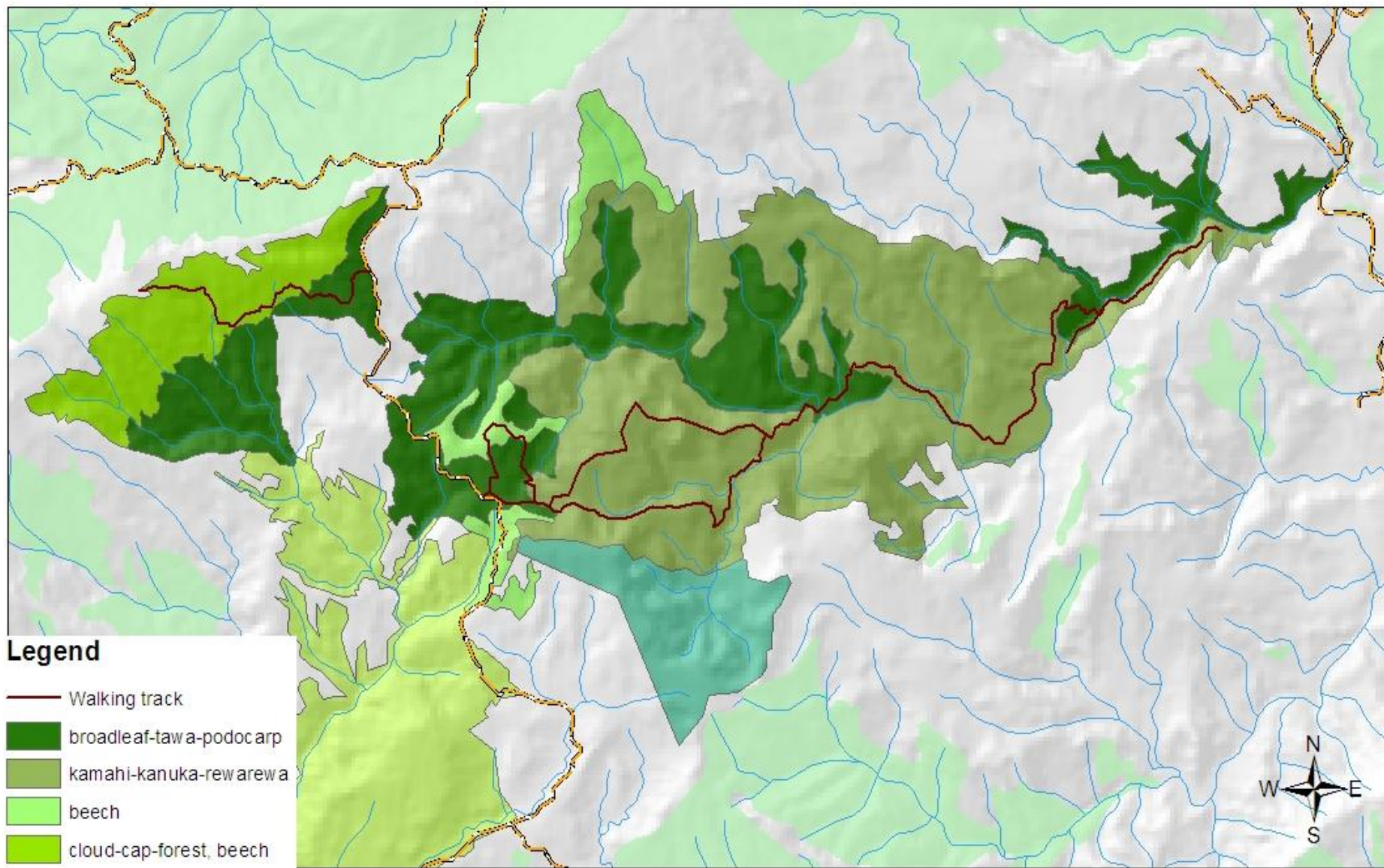
## Boundary Stream



**DOC "Mainland Islands"**  
Established 1995-7



A island of bush in (almost) a sea of farmland...



### Legend

- Walking track
- broadleaf-tawa-podocarp
- kamahi-kanuka-rewarewa
- beech
- cloud-cap-forest, beech
- unspecified native
- pine plantation
- pasture
- Forest cover outside BSMI

800 ha  
300-1000 m asl  
Stock fenced

Vegetation cover at BSMI

0 250 500 1,000 Meters



Poison inside



By-catch in and out



Trapped in and out

AHB/RC control outside



Targetted control in and out

# Pest control



Trapped in and out



Sporadic control inside



Limited Targetted control inside



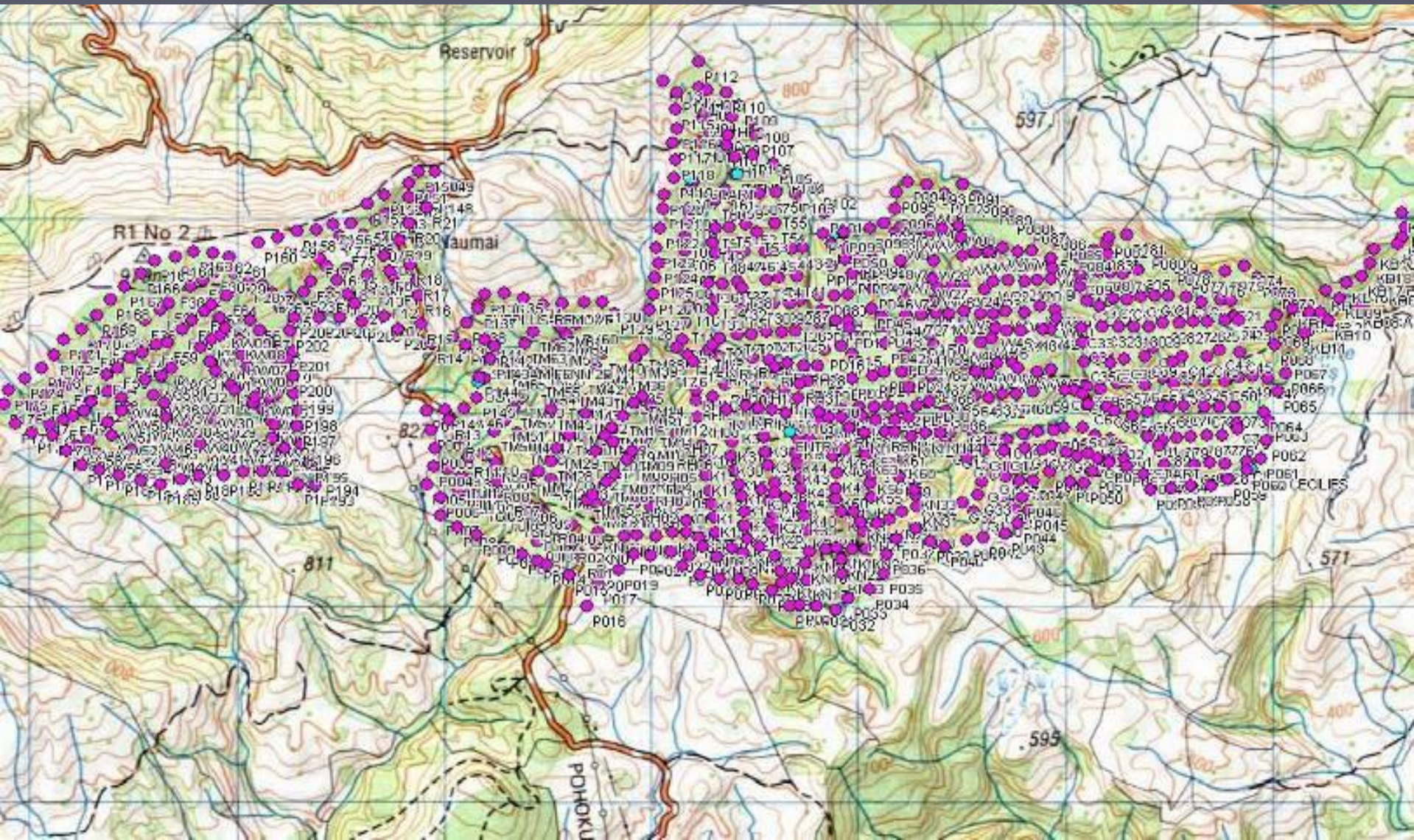
Trapped in and out



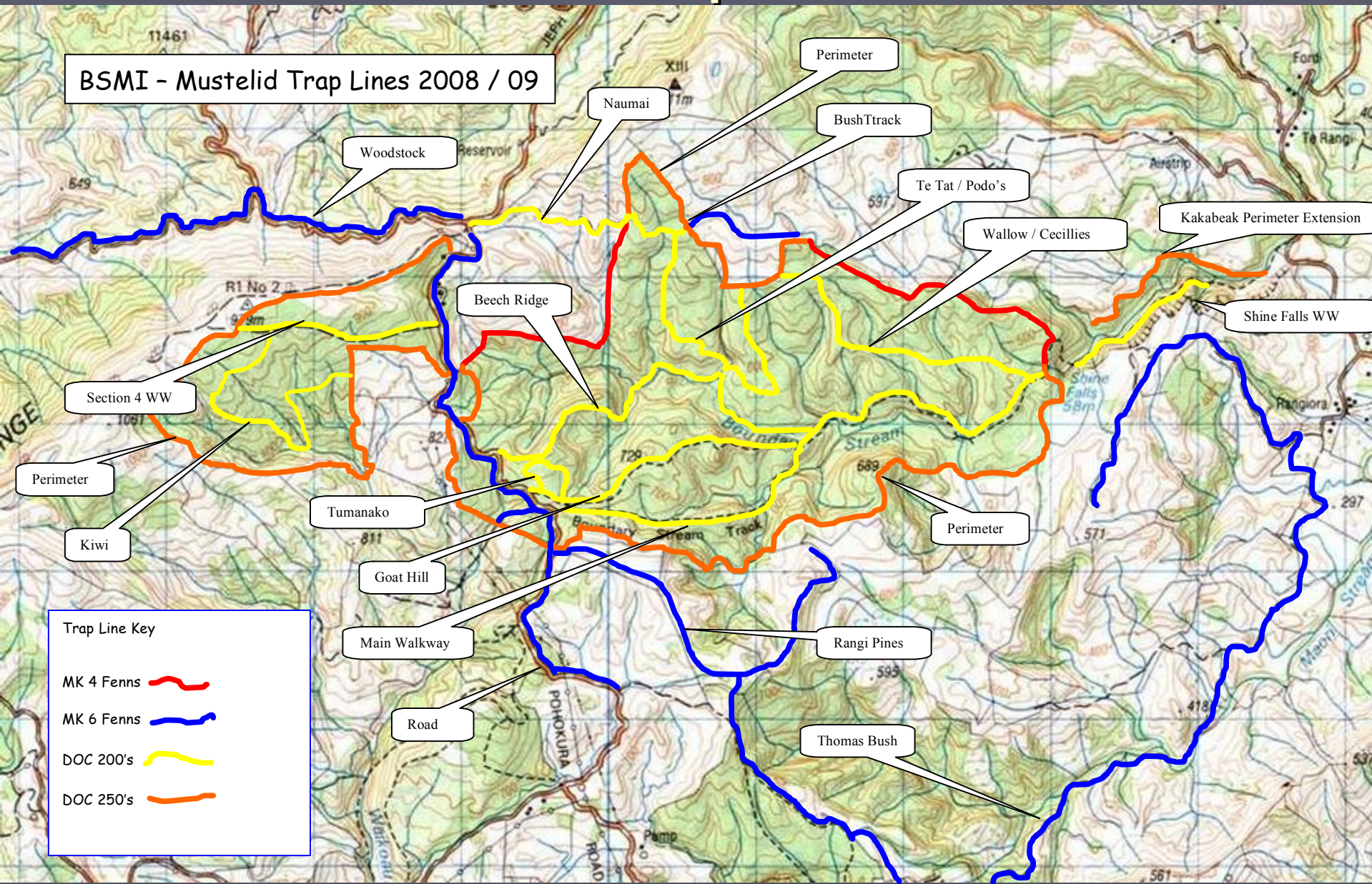
Trapped in and out

943 Bait Stations = 87 kms rebaited every 2 months

Currently using Rat-Abate<sub>TM</sub> (Diphacinone) to control rodents



# Mustelid trap lines



# Audits

## Mustelid Tracking Tunnels

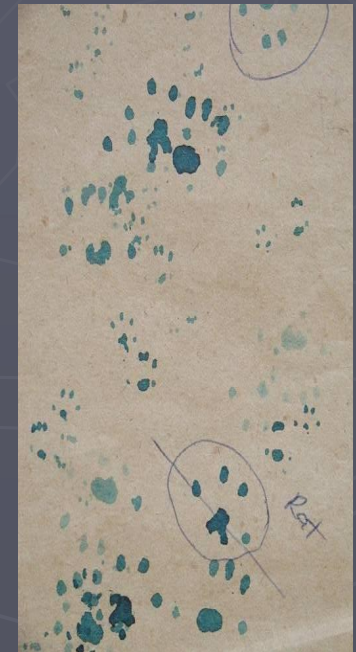
- Monthly over summer Nov. to Feb. inclusive

## Rodent Tracking Tunnels

- Every three months throughout the year
- Target 5% year round
- Exceeded late summer/autumn

## Possum wax tags

- Annually



# Predators killed between August 1996-June 2008



782 cats



897 stoats

340 weasels



156 ferrets





Invertebrate  
pitfall trapping

Kiwi call count survey

Vegetation: kakabeak; mistletoe; vege plots



5 minute bird counts

# Outcome Monitoring

Are we doing enough to make  
a difference?



occupancy of weta houses



Kereru distance sampling



Lizard Artificial cover monitoring



Kokako territory  
survey



Setting the net



Watching...



Capture

# TRANSLOCATIONS



RELEASE



Transportation

► 1998 – N.I. Robin

28 birds 6F/22M source Tarawera



► 2000 - 07– N.I. Brown Kiwi

39 ONE birds from Kaweka +1

► 2001 – N.I. Kokako

5 pairs source Otamatuna; breed and release



► 2004 – N.I. Saddleback

36 source Cuvier Island

► 2007 – N.I. Kokako

10 kokako (4 M/ 6 F)



# Some other things we do

- ▶ Rural fire fighting
- ▶ Public talks
- ▶ School and university visits



Boundary Stream team and Paddy win wajax competition

# Some challenges....



# Pest control...



- ▶ Keeping up with technology/best practice...
- ▶ Meeting targets year round
- ▶ Etc etc etc

A close-up photograph of a kiwi bird, showing its head and neck. The bird's head is buried in the ground, and its long, dark, pointed beak is visible. The background is a soft, out-of-focus natural setting.

Establishing a new population

Kiwi...a case study

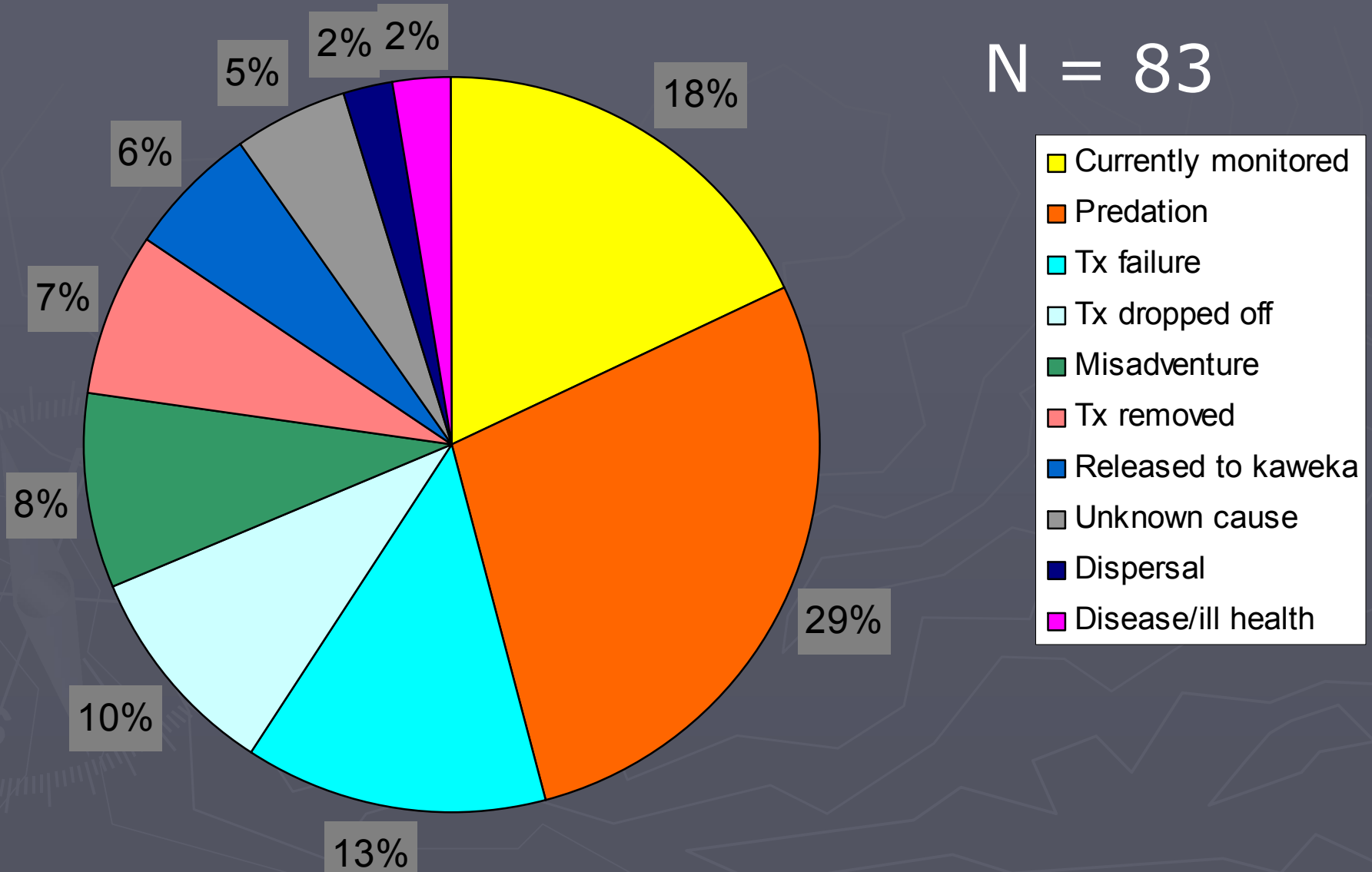
# NI Brown Kiwi reintroduction

- ▶ 40 kiwi released since 2000 using ONE
  - 39 sourced from Kaweka Forest Park
  - 1 rescued from possum trap in Willow Flat
- ▶ 43 chicks hatched in wild since 2004
- ▶ Currently monitoring 7 pairs



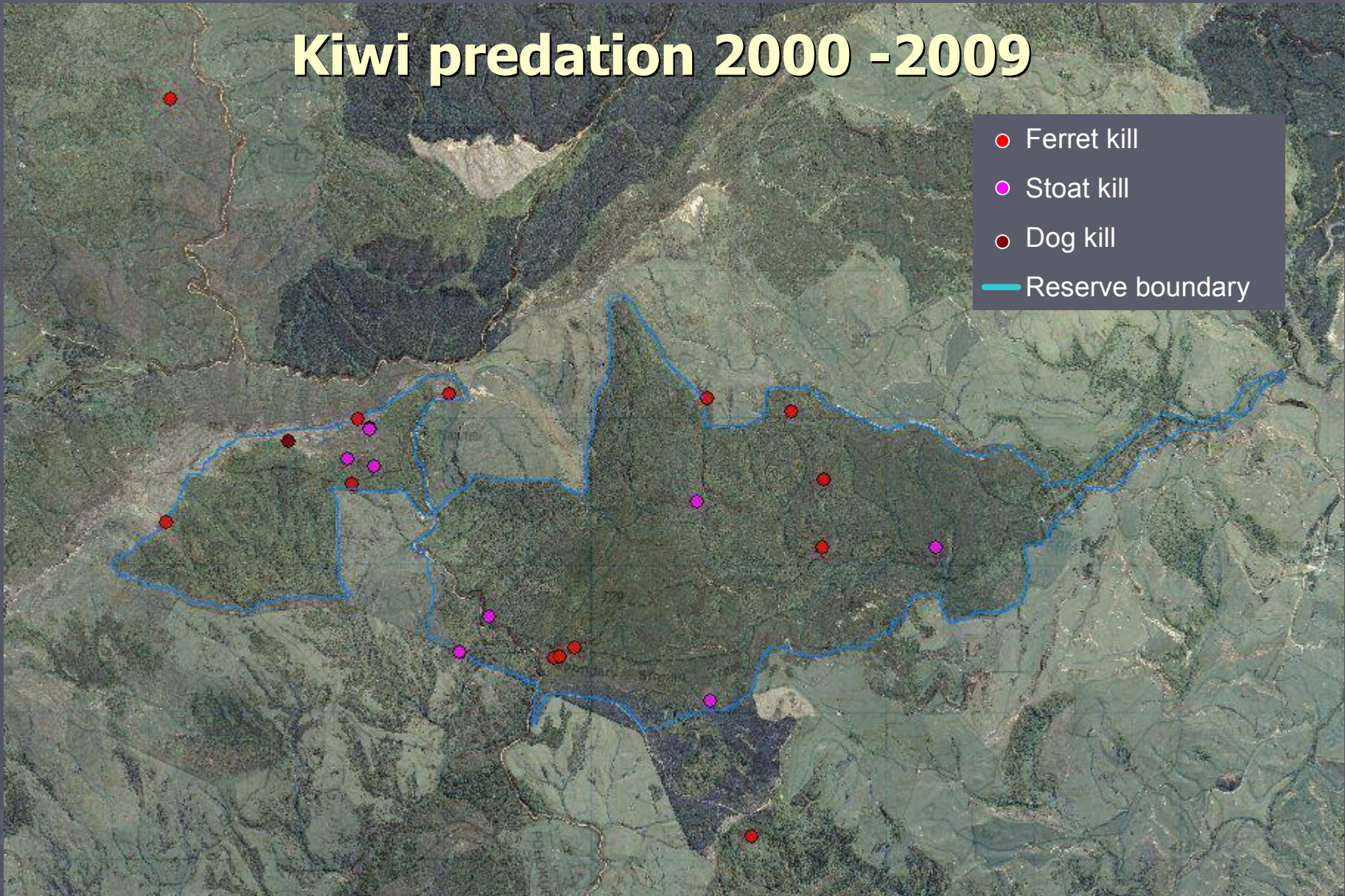
# What's happened to all our kiwi...

N = 83



# Kiwi predation 2000 -2009

- Ferret kill
- Stoat kill
- Dog kill
- Reserve boundary



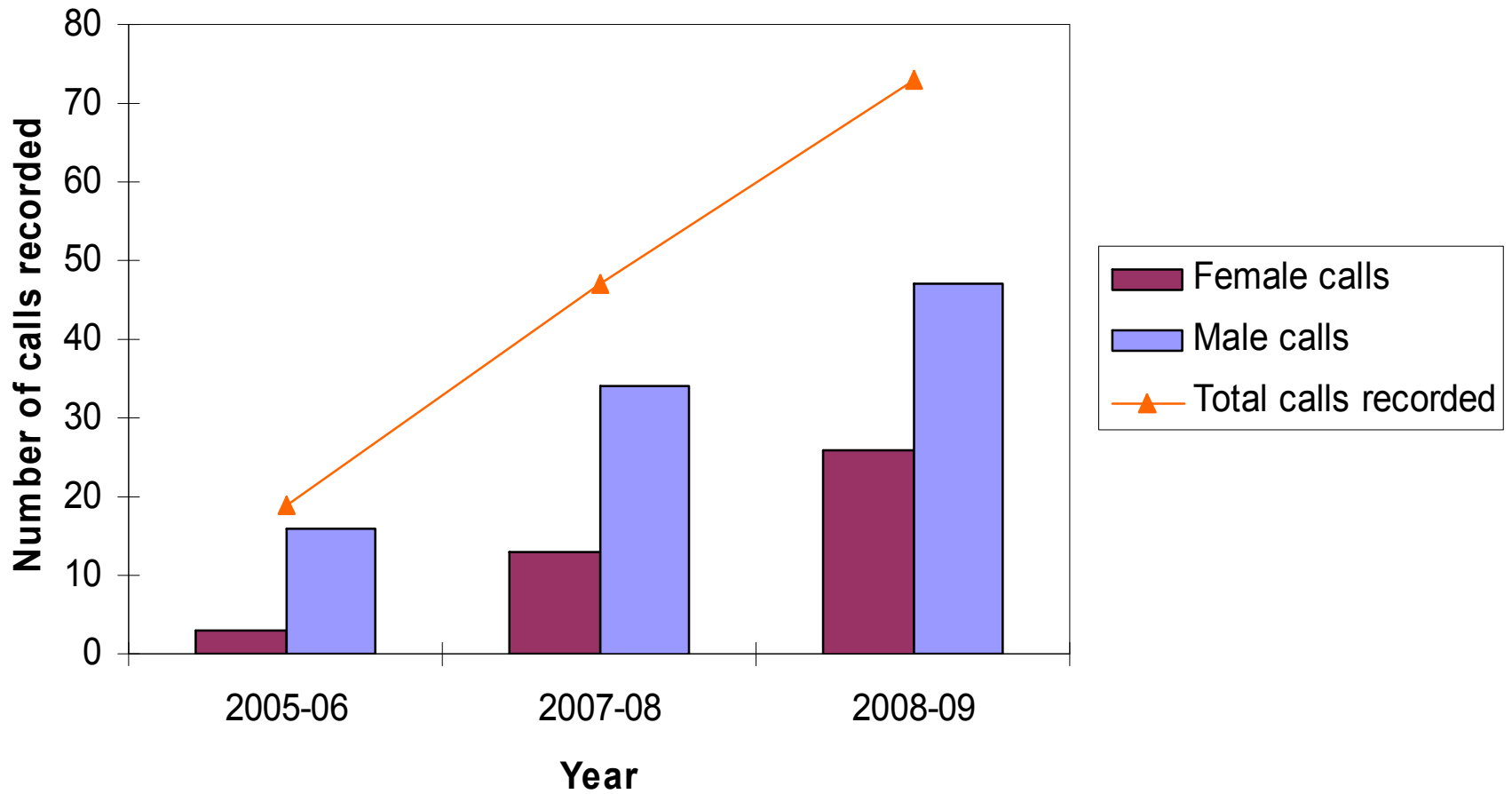
# Kiwi Chick Survival

- ~ 5% survival to 1 yr without management
- mostly due to stoat predation
- target is 20% survival to 1000gms
- Averaged since 2004 = 56%



Photo: DOC

# Kiwi call count survey results



# Genetics...

- ▶ What is a good genetic base for a population?
  - BSMI population based on 12 founders
  - Currently kiwi from 9 founders are breeding
    - ▶ 6 unrelated combination
    - ▶ 2 sibling pairs
      - 1 deformed chick (out of 7 hatched)



# Being a govt dept

Some stickers that we  
have taken off Doc  
signs in our area  
lately...

We haven't used 1080  
since 2005...

 **1080**   
**Kills Everything**

 **1080**   
**Kills Everything**

 **1080**   
**Kills Everything**

 **1080**   
**Kills Everything**

 **1080**   
**Kills Everything**

# The weather...



Some successes – to  
end on a positive note....



# Flora recovery



Plot 15 A-D 1997



Plot 15 A-D 2009

# Fauna recovery – translocations out!

► 2007 N.I. Rifleman  
To Cape Kidnappers



► 2008 Whitehead  
Also to Cape Kidnappers



# Establishing populations of:

- ▶ NI Robin
- ▶ NI Kokako
- ▶ NI brown kiwi



2003 1<sup>st</sup> kokako chicks  
hatched in HB for 100 yrs

# Challenge AND Success Volunteers

- ▶ Volunteers integral part of team
- ▶ Contributed **3137** hours in last year
- ▶ Competition for small pool of volunteers with other local projects



Planting kakabeak



Filming 'meet the locals'



Human tracking tunnel  
at Tutira open day



Helping band  
birds